

(BLXT) BR101 repaints pack for Hamburg-Hannover (Train Simulator 2014)

Introduction

This pack is adapting some of the already available BR 101 repaints to the route “Hamburg – Hannover”. This brings two advantages:

- these BR101 repaints are now featuring SiFa, PZB and LZB
- the “Kuju” folder is no more needed to have them running in the game

You need first to download the repaints if you don't have them installed yet. The concerned repaints are:

- Agfa (from <http://www.rail-sim.de/railsimnew/index.php/downloadscat/viewdownload/138-br-101/568-br101-agfa-taiwan>)
- Bayer (from <http://www.rail-sim.de/railsimnew/index.php/downloadscat/viewdownload/138-br-101/786-br-101-bayer>)
- BKK (from <http://www.rail-sim.de/railsimnew/index.php/downloadscat/viewdownload/138-br-101/733-br-101-bkk>)
- BKK (from <http://www.rail-sim.de/railsimnew/index.php/downloadscat/viewdownload/138-br-101/1206-br101-german-skin-pack>)
- Bundespolizei (from <http://www.rail-sim.de/railsimnew/index.php/downloadscat/viewdownload/138-br-101/1206-br101-german-skin-pack>)
- Cewe (from <http://www.rail-sim.de/railsimnew/index.php/downloadscat/viewdownload/138-br-101/1342-br101-db-fernverkehr-repaint-cewe>)
- DIN (from <http://www.rail-sim.de/railsimnew/index.php/downloadscat/viewdownload/138-br-101/939-br-101-din>)
- Ecophant (from <http://www.rail-sim.de/railsimnew/index.php/downloadscat/viewdownload/138-br-101/1206-br101-german-skin-pack>)
- Environment (from <http://www.rail-sim.de/railsimnew/index.php/downloadscat/viewdownload/138-br-101/1341-br101-db-fernverkehr-repaint-environment>)
- HerthaBSC (from <http://www.rail-sim.de/railsimnew/index.php/downloadscat/viewdownload/138-br-101/1206-br101-german-skin-pack>)
- Ice Age (from <http://www.rail-sim.de/railsimnew/index.php/downloadscat/viewdownload/31-e-lokomotiven/215-br101-ice-age-v2>)
- KTP (from <http://www.rail-sim.de/railsimnew/index.php/downloadscat/viewdownload/138-br-101/734-br-101-ctp>)
- KTPreis (from <http://www.rail-sim.de/railsimnew/index.php/downloadscat/viewdownload/138-br-101/1343-db-fernverkehr-repaint-ctp>)

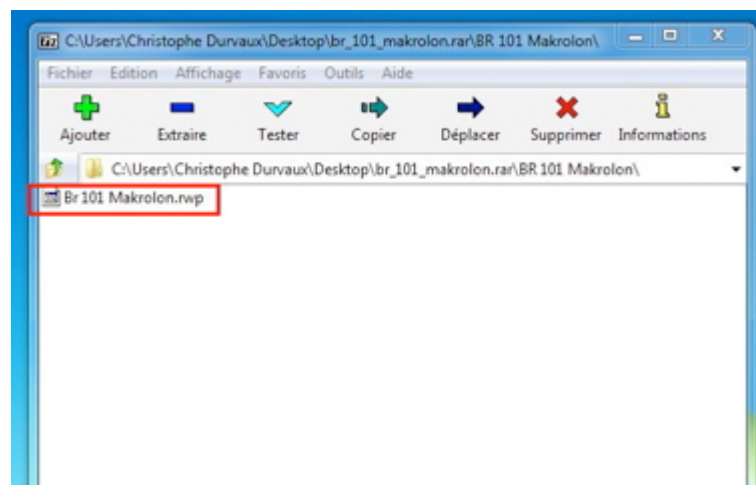
- Legoland (from <http://www.rail-sim.de/railsimnew/index.php/downloadscat/viewdownload/138-br-101/754-br-101-lego>)
- Makrolon (from <http://www.rail-sim.de/railsimnew/index.php/downloadscat/viewdownload/138-br-101/1622-br-101-makrolon>)
- Metropolitan (from <http://www.rail-sim.de/railsimnew/index.php/downloadscat/viewdownload/138-br-101/1344-br101-db-fernverkehr-repaint-metropolitan>)
- Nett Hier (from <http://www.rail-sim.de/railsimnew/index.php/downloadscat/viewdownload/138-br-101/857-br101-nett-hier>)
- Polizei (from <http://www.rail-sim.de/railsimnew/index.php/downloadscat/viewdownload/31-e-lokomotiven/218-br101-polizei-version>)
- RotDirty (from <http://www.rail-sim.de/railsimnew/index.php/downloadscat/viewdownload/138-br-101/1206-br101-german-skin-pack>)
- Starlight (from <http://www.rail-sim.de/railsimnew/index.php/downloadscat/viewdownload/31-e-lokomotiven/234-starlight-express>)
- StarWars (from <http://www.rail-sim.de/railsimnew/index.php/downloadscat/viewdownload/138-br-101/990-br-101-star-wars>)
- Taiwan (from <http://www.rail-sim.de/railsimnew/index.php/downloadscat/viewdownload/138-br-101/568-br101-agfa-taiwan>)

Note that the TTB repaints included in their BR101 PlusPack are not modified. However, the repaints of the TTB Goodies pack can be also used.

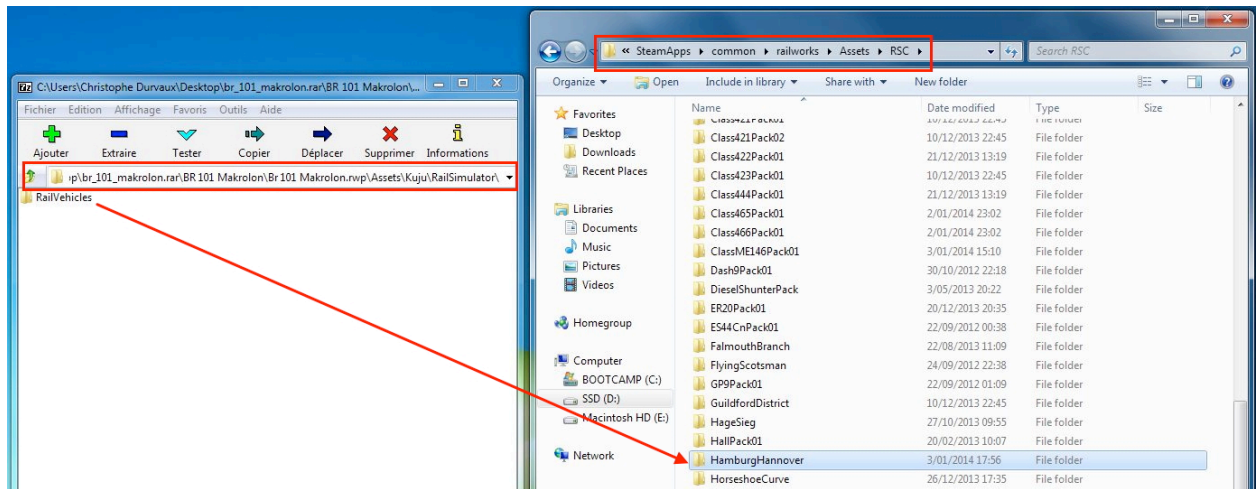
How do I install the pack ?

Let's take an example (Makrolon repaint). Follow these steps:

- 1) Open the repaint archive, you downloaded. In most case, you'll find a .rwp package:

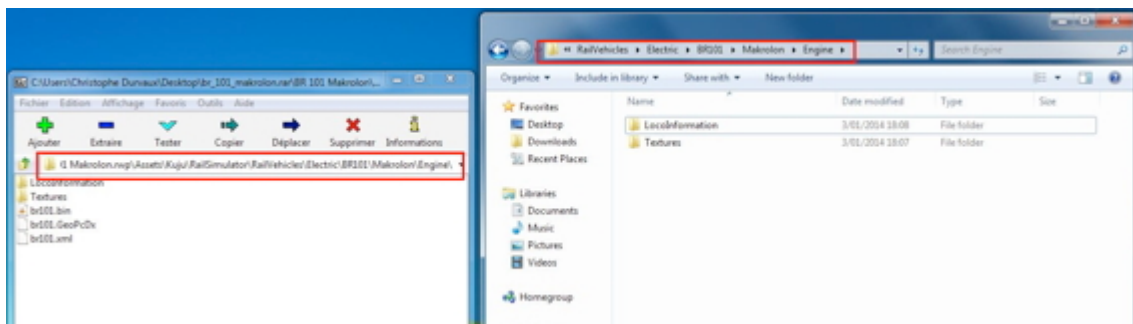


- 2) Don't use the TS Utility to install this rwp, because it will install the repaint in the Kuju folder ! You have to open the rwp (which in fact a zip file) with a zip program (as 7z or Winrar) and navigate to the RailVehicles folder. You get something like this:

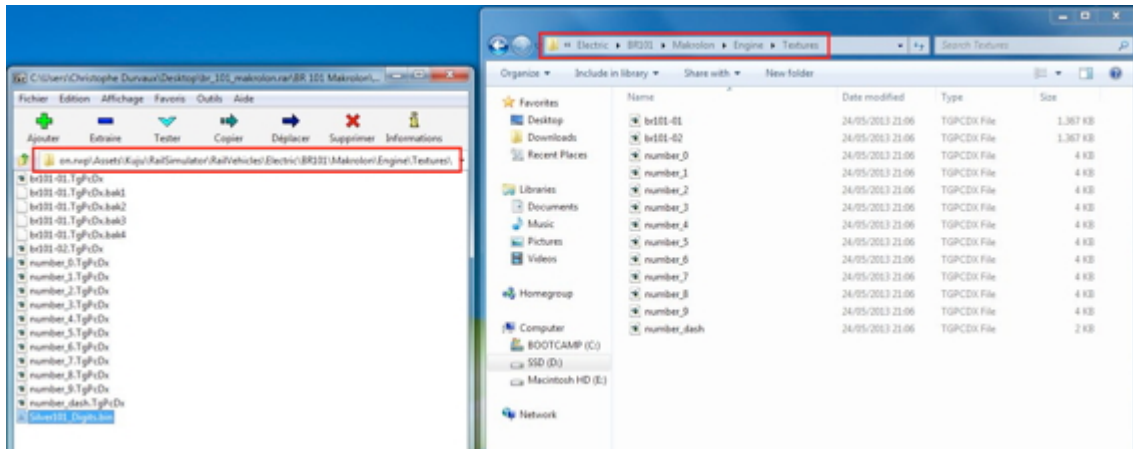


At this time, move the RailVehicles folder to the folder RSC\HamburgHannover. Click yes if Windows is asking you to merge the folders.

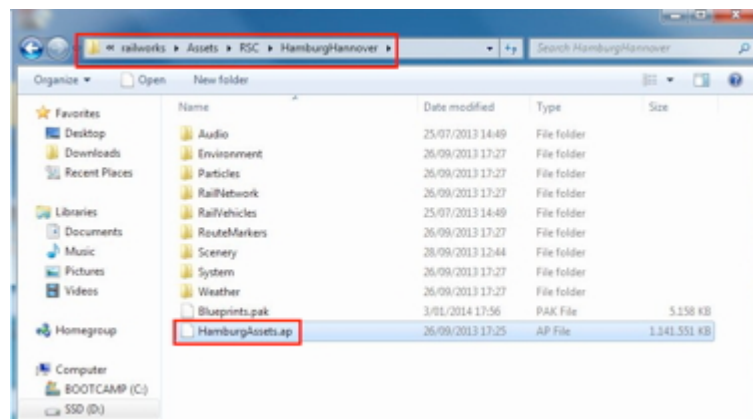
- 3) This step is not mandatory but it may avoid preserving useless files in your folders. Typically you have to remove from the "Engine" folder the .bin and .GeoPcDx files (they will be replaced later)



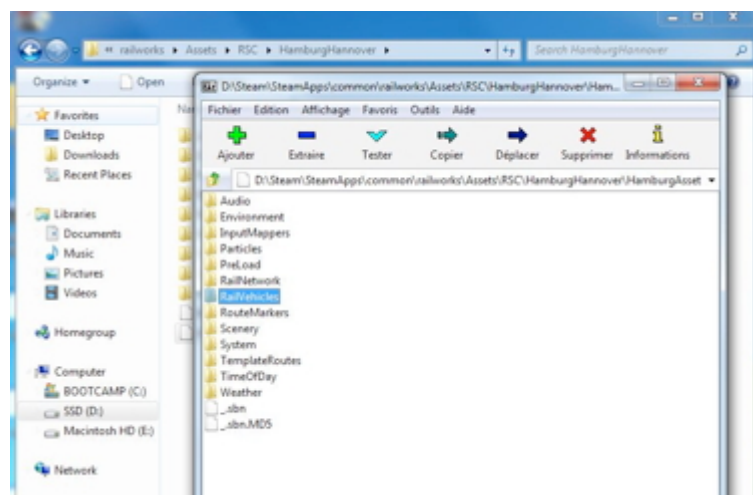
and in the "Textures" folder you only have to preserve the "br101-01.TgPcDx", "br101-02.TgPcDx", "number-dash.TgPcDx" and "number_0.TgPcDx" to "number_9.TgPcDx" files. Note that in some repaints you may have less than 10 "number.TgPcDx" files !



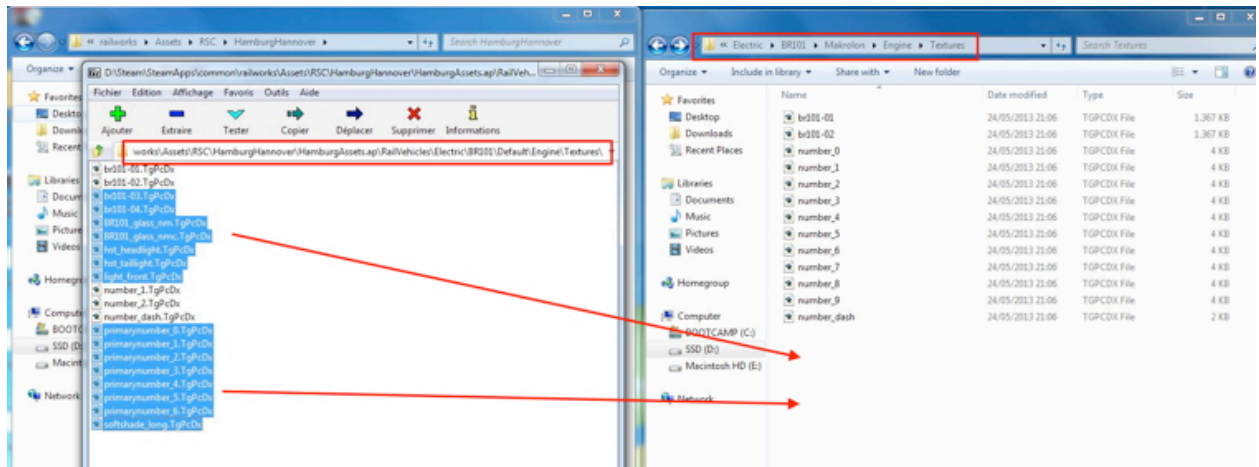
- 4) Now you will have to copy RSC BR101 files from Hamburg-Hannover route. To do this, navigate to the folder RSC\HamburgHannover. You will find a file named "HamburgAsset.ap".



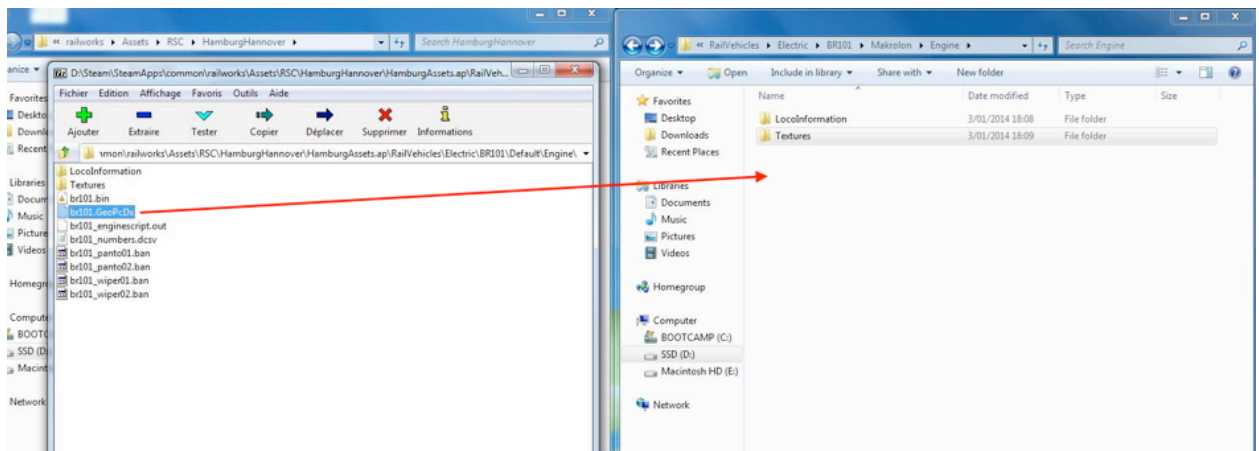
- 5) Open it with a zip program as previously with the rwp package. You will find a "RailVehicles" folder in it.



- 6) Go to the folder HamburgAssets.ap\RailVehicles\Electric\BR101\Default\Engine\Textures where you will select the following files and copy them to the "Textures" folder of your repaint folder.

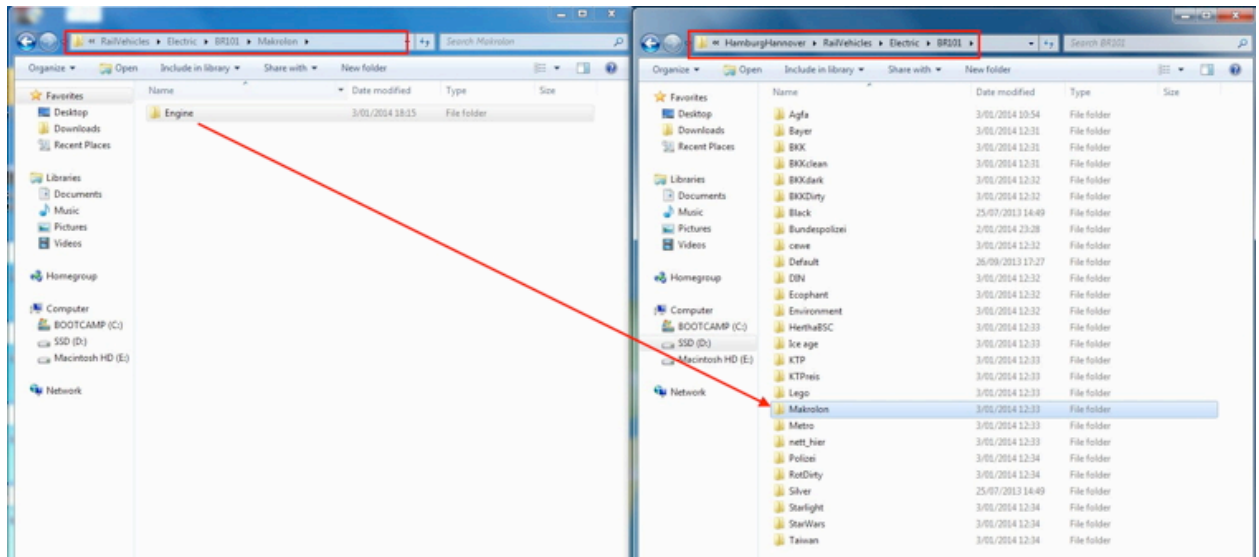


- 7) When done, go back to HamburgAssets.ap\RailVehicles\Electric\BR101\Default\Engine\ and copy the br101.GeoPcDx file to the “Engine” folder of your repaint folder.

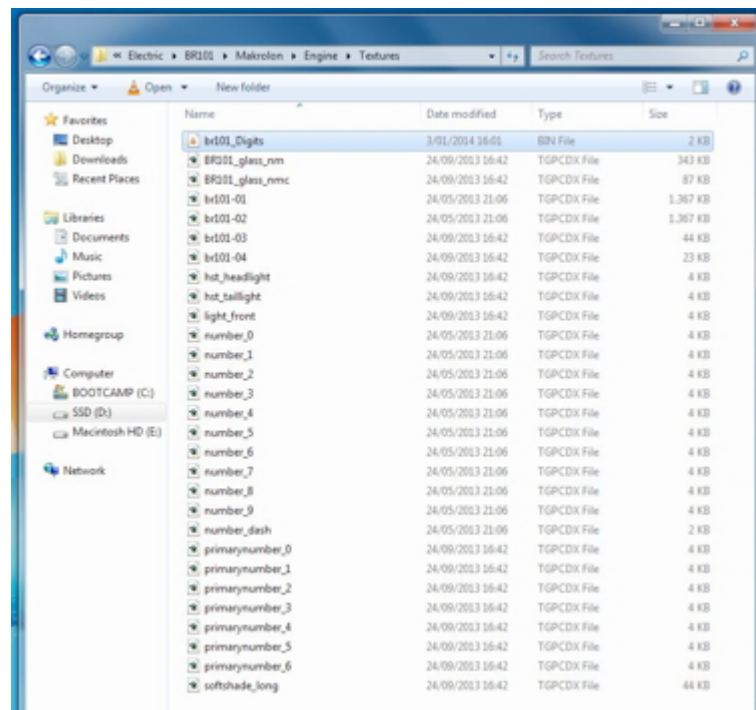


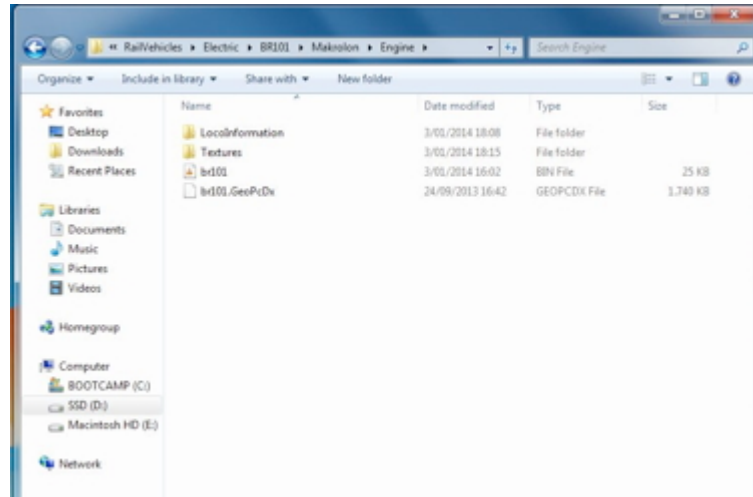
Note that if you didn't remove files as shown in step 3, Windows will prompt asking you to merge files and to replace them. Click always yes. Do the same for every repaint, you want to install.

- 8) The last step is to copy the files provided by this archive. If you have copied all of the repaints, you may move the RailVehicles folder from this archive to the RSC\HamburgHannover folder. If needed, click yes to replace files. If you only have a few repaints installed, you may copy the “Engines” folder one by one to their related folder.



- 9) The installation is now complete. For this Makrolon example, your “Engine” and “Textures” must be like this:





10) Clear TS 2014 cache.

How do I use the pack ?

It's quite simple. Open the scenario editor and navigate to the “engines” menu. The repaints will be listed as “HH Class 101 DBAG <name of repaint>”

For questions or comment, please send an email to railworks@beluxtrains.net

Enjoy !

Christophe Durvaux (January 2014)

<http://www.beluxtrains.net>